

LIFE BALANCE COUNSELING

# BLUE ANGELS AUTISM SUPPORT GROUP

## Weekly Topics

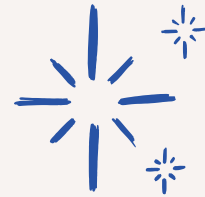
- What is Autism?
- Speech and Language
- Sensory Challenges
- Social Deficits
- Maladaptive Behaviors
- IEPs and Therapy
- Long-term care considerations
- Wrap-up

A discussion-based forum and support group for parents of children with Autism Spectrum Disorders, and education for those whose loved ones may have Autism.

**Sat 9:00-10:00 am**

**Oct 7 - Nov 18, 2023**

**1375 Remington Rd. Suite K  
Shaumburg, IL 60173**



**Contact us to register!**

**Facilitator: Tina Thompson**

Tina@lbcounseling.com

ph. 888-234-7628 ext.701